



RANCHER'S THURSDAY LUNCHTIME SERIES

Forage Management

- **Thursday, July 23, 2020 | 12:30 p.m.**
Late-Summer Supplementation to Enhance Cattle Performance
- David Lalman and Paul Beck

- **Thursday, July 30, 2020 | 12:30 p.m.**
Managing Bermudagrass Pastures for Fall Grazing
- Brian Pugh

- **Thursday, August 6, 2020 | 12:30 p.m.**
Internet-Based Tools Available for Rangeland Management
- Laura Goodman

Late-Summer Supplementation

David Lalman and Paul Beck

Ferguson College of Agriculture
Department of Animal and Food Sciences

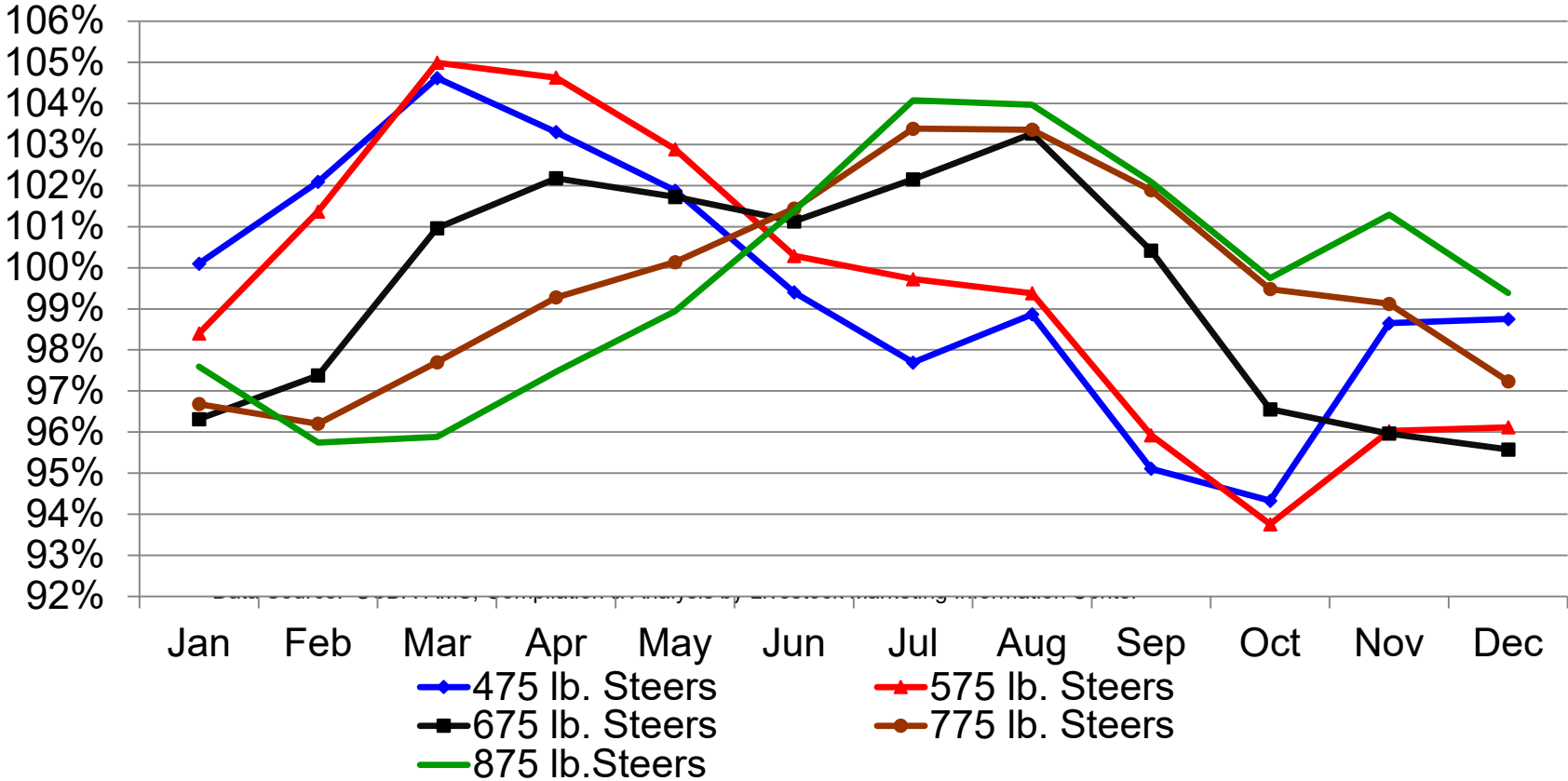
July 23, 2020



EXTENSION

LUNCHTIME SERIES

Oklahoma Steer Seasonal Price Index Combined Auctions, 2007-2016



NUTRITIVE VALUE OF FORAGES



Performance is limited by:

- a) Protein
- b) Energy (digestibility)
- c) Both



Forage Nutritive Values

Tallgrass prairie (Basurto et al.)

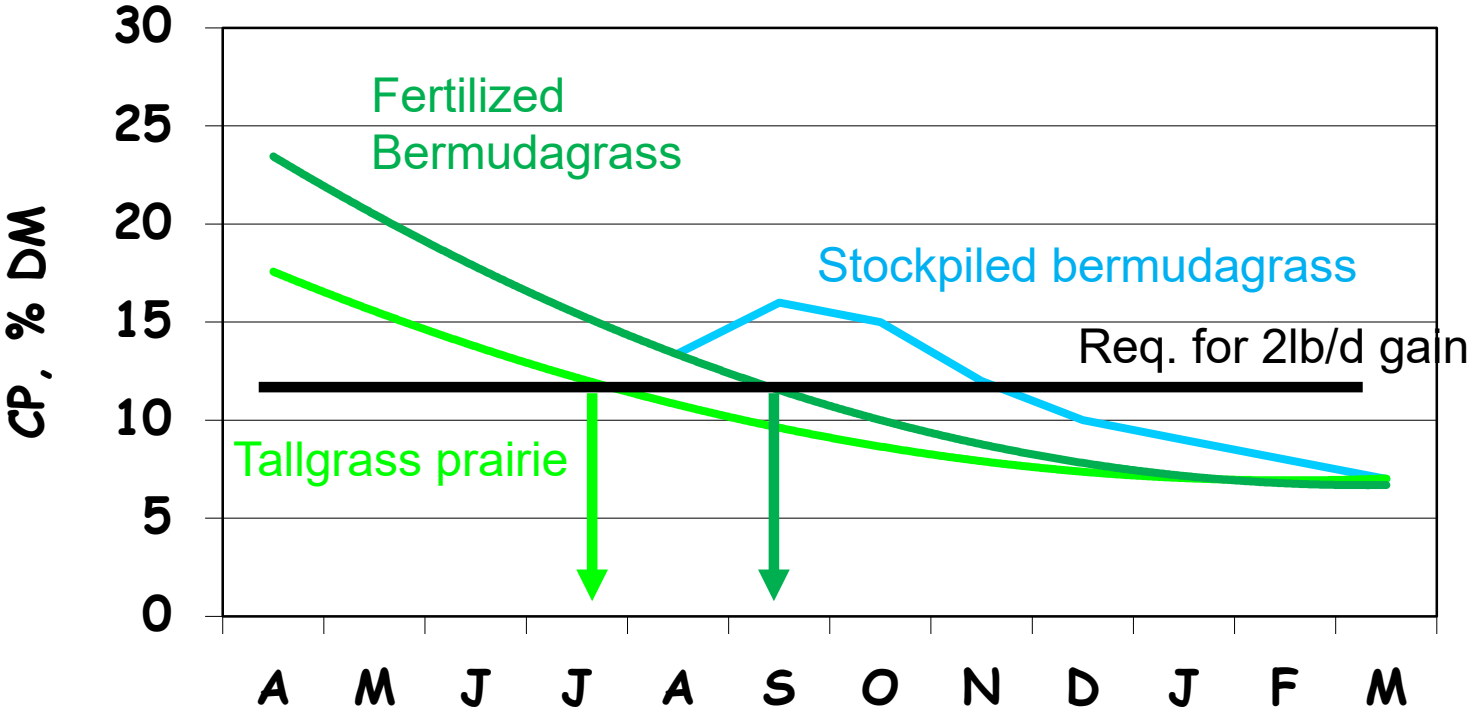
- Stillwater, OK
- Continuously grazed, moderately stocked
- 5 yrs data collection
- Grazed forage samples from fistulated steers

Bermudagrass (McCroskey et al.)

- El Reno, OK
- Continuously grazed, moderately stocked
- 2 yrs data collection
- Grazed forage samples from fistulated steers
- 200 lb N fertilizer in 3 equal applications:
May 1, June 15, Aug. 1



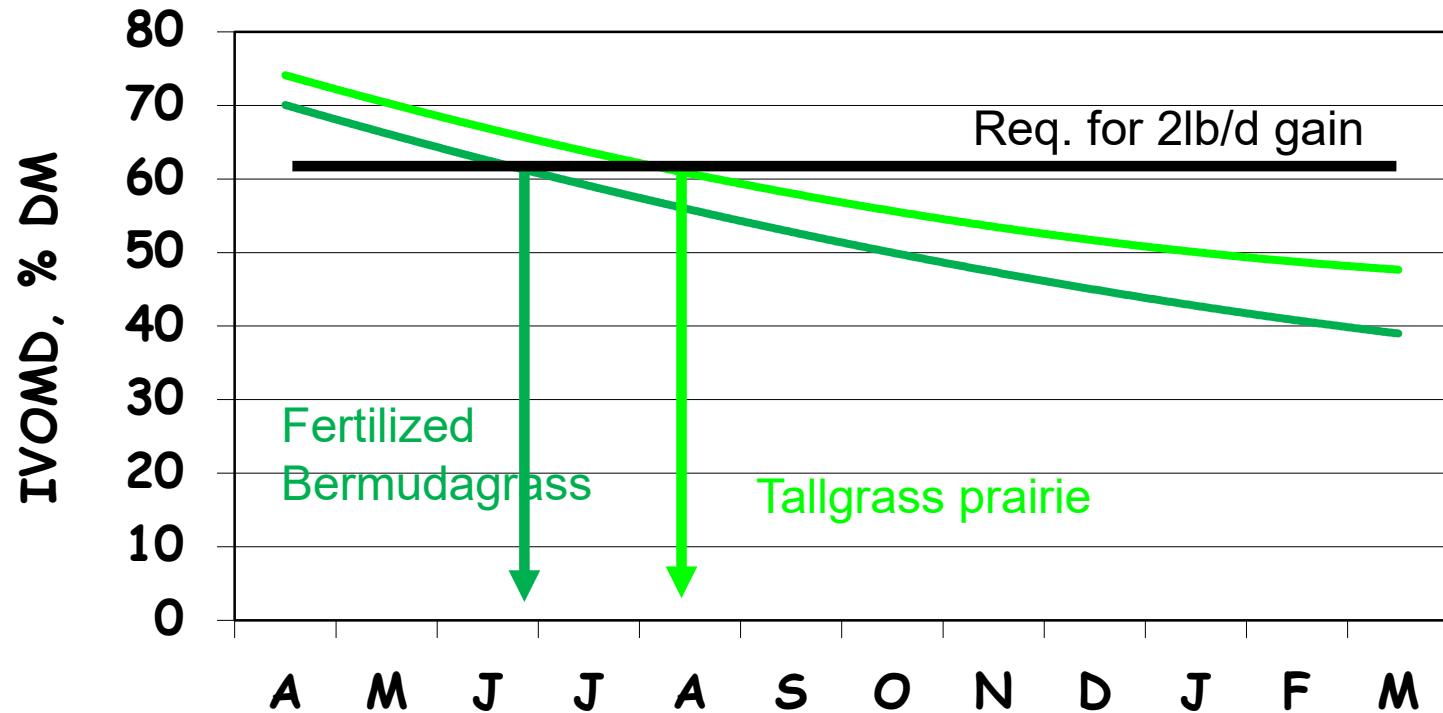
Protein



McCroskey and Basurto, OSU



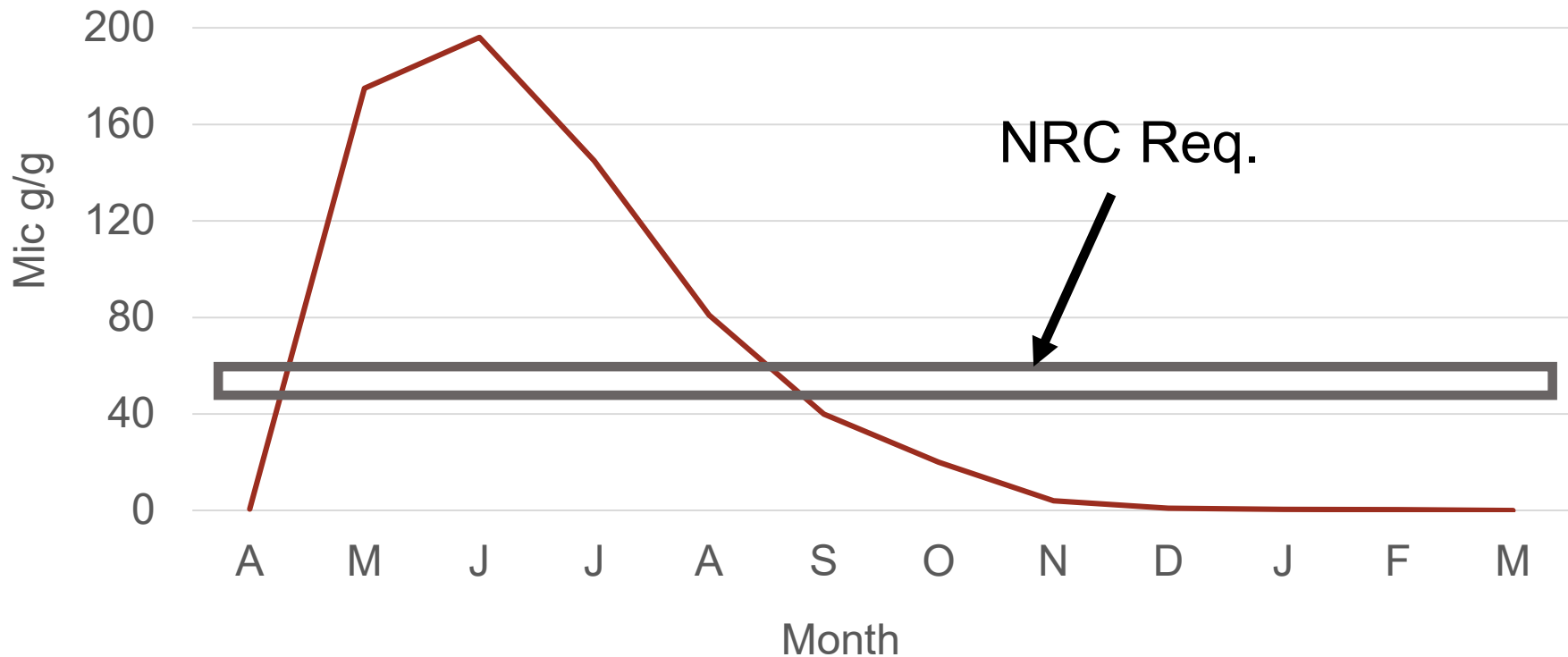
Digestibility



McCroskey and Basurto, OSU



Carotene in Native Pasture



Waller et al., 1972



EXTENSION

LUNCHTIME SERIES

Protein for Stockers Grazing Native Pasture Late Summer

Init. Date	Days	Init. Wt.	Cont. ADG	Sup. ADG	Dif.	Sup. Conv.
7/16	96	580	1.44	1.88	.44	1.8
7/20	56	350	1.35	1.72	.37	2.2
7/20	62	616	1.06	1.39	.33	3.2
8/16	56	490	.83	1.32	.49	2.0
7/16	84	645	.83	1.25	.42	2.9
5/25	84	365	1.48	1.75	.27	3.7
Avg	71	498	1.13	1.51	.37	2.7



Ionophore Feed Additives

Ionophores currently available:

Monensin (Rumensin®)

Lasalocid (Bovatec®)

Laidlomycin propionate (Cattlyst®)

Typical response = 0.1 to 0.2 lb
added weight gain per day



Oklahoma Gold

- One lb/hd/day 37-40% CP all-natural supplement
- Vit. A, trace minerals, ionophore
- Fed every other day, or pro-rated for M/W/F
- Response was .37 lb improvement in ADG
- Response to ionophore was .13 to .28 lb
- Response to complete supplement was .57 lb
- Supplement efficiency average = 1.8 lb of supplement/lb of added gain



Oklahoma Super Gold

- 2.5 lb/hd/day of all natural 25%CP supplement
- Vitamins, minerals, and additive
- Fed every day, or every other day (based upon feed additive label directions)
- Response average = .76 lb/hd/day increase
- Supplement efficiency average = 3.3 lb of supplement/lb added gain



David Lalman

Professor and Harrington Chair
Extension Beef Cattle Specialist

O | 405.744.6060

E | david.lalman@okstate.edu

beef.okstate.edu



EXTENSION

LUNCHTIME SERIES